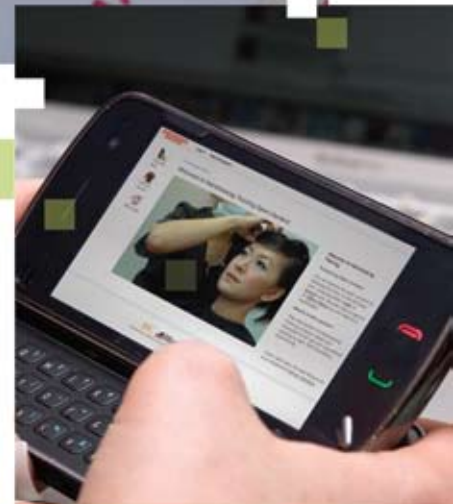




Working in Partnership

Demonstrating support for the FE communities



This leaflet is taken from the JISC publication Working in Partnership: Demonstrating JISC services' support for the FE communities. The full document can be found in pdf format at www.jisc.ac.uk/publications/generalpublications/2009/workinginpartnership

JISCMail

Strategic communication

The National Academic Mailing List Service, or JISCMail, is a free, secure mailing list service funded by JISC specifically for the HE, FE and research communities. JISCMail currently manages over 7,000 mailing lists with an average of two new lists being created every day.



A JISCMail list can be set up by anyone working in an educational establishment as long as membership is open to more than one learning provider.

Background

A regional Heads of IT network, set up by Derby College in conjunction with JISC RSC East Midlands, enables heads of IT in the East Midlands to discuss issues and concerns and share solutions to common problems. Between face-to-face meetings, the group relies on a JISCMail list to sustain the flow of ideas and information.

Challenge

Heads of IT are often under pressure to provide an ever-expanding service on a tight budget. They also have to balance the aspirations of practitioners and learners against the need to maintain the security and stability of college systems and to operate these systems efficiently and within the law.

Many members of the East Midlands Heads of IT network subscribe to mailing lists of a technical nature but find that these offer limited guidance on managerial issues. What is needed is access to the experience, advice and support of other staff in the region.

JISCMail uses the internet and email to enable groups to communicate and share information with one another.

Making the most of JISCMail

The Heads of IT JISCMail list has proved a safe haven where members can sound out ideas and learn from one another's successes and mistakes within a trusted community. Before carrying out developmental and experimental work (which can be costly and sometimes risky), the heads of IT can consult with members of the JISCMail list before making decisions.

The list is also used to organise face-to-face meetings and to advertise events and webinars which not only contribute to the growth of the community but also help individual learning providers to manage their infrastructure more effectively.

The national ILT Champions' (CHAMP-CURRICULUM) mailing list performs a very similar function for those who support the use of technology in learning and teaching. However, this JISCMail list provides more than a source of encouragement – ILT champions in Northern Ireland, who often have difficulty in attending conferences and training events in other parts of the UK, find the ILT Champions' list an invaluable way of keeping in touch with new developments.

'At least I'm not alone in trying to get to grips with ILT. I can learn from the experiences of others on the list.'

ILT Champion
Northern Ireland

JISCMail lists offer

- *A discussion room with threaded discussion forums*
- *A file-sharing area*
- *Tools for setting up meetings and generating questionnaires*
- *Searchable archives of all postings on the list*
- *RSS feeds that allow list activities to be integrated into a blog or VLE*
- *Reporting functions that allow list owners to gather data on the use of their lists*

Further information

www.jiscmail.ac.uk.

JISCMail is a **JISC Advance** service.

You can find a more detailed version of this case study online at www.jisc.ac.uk/whatwedo/services/about/casestudies



Working in Partnership

Further information on JISCMail

Web: www.jiscmail.ac.uk

Email: helpline@JISCMail.ac.uk



JISC

Further information on
JISC services

Web: www.jisc.ac.uk

Email: info@jisc.ac.uk

Tel: +44 (0)117 3310789

JISC receives funding from the Higher Education Funding Council for England, the Scottish Funding Council, the Higher Education Funding Council for Wales, the Department for Children, Education, Lifelong Learning and Skills (Wales) and the Department for Employment and Learning in Northern Ireland.

JISC works in partnership with the Learning and Skills Council and the Research Councils.